

survival guide

Welcome to Valencia!



Erasmus Student Network
València UPV

what is this?

Dear International Student,

First of all, welcome to Valencia! Now that we have your attention, we would like to introduce ourselves and let you know that from now on, you can count on us anytime.

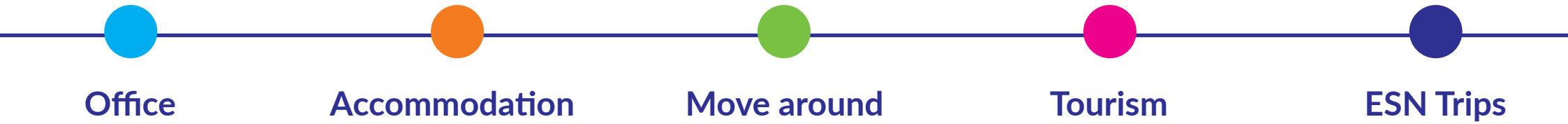
We are **Erasmus Student Network (ESN)**, which is a non-profit international student organisation. Our mission is to represent international students, thus provide opportunities for cultural understanding and self-development under the principle of **Students Helping Students**.

ESN València UPV is one of the two local sections located in Valencia. We work alongside the Universitat Politècnica de València, where our office is located. Our organisation was founded in 2009 and since then, we have been organising trips throughout Spain and all kinds of social, cultural and non-university related activities. We also help all the international students in anything we can.

We are students, just like you, who work **voluntarily** to make your international experience unforgettable. Most of us have been studying abroad in other countries, and this has changed completely our lives. Now we are working hard so Valencia can have the same influence on you.

Would you like to get to know us better? We have prepared this guide for you. **Keep reading and discover what all this is about!**

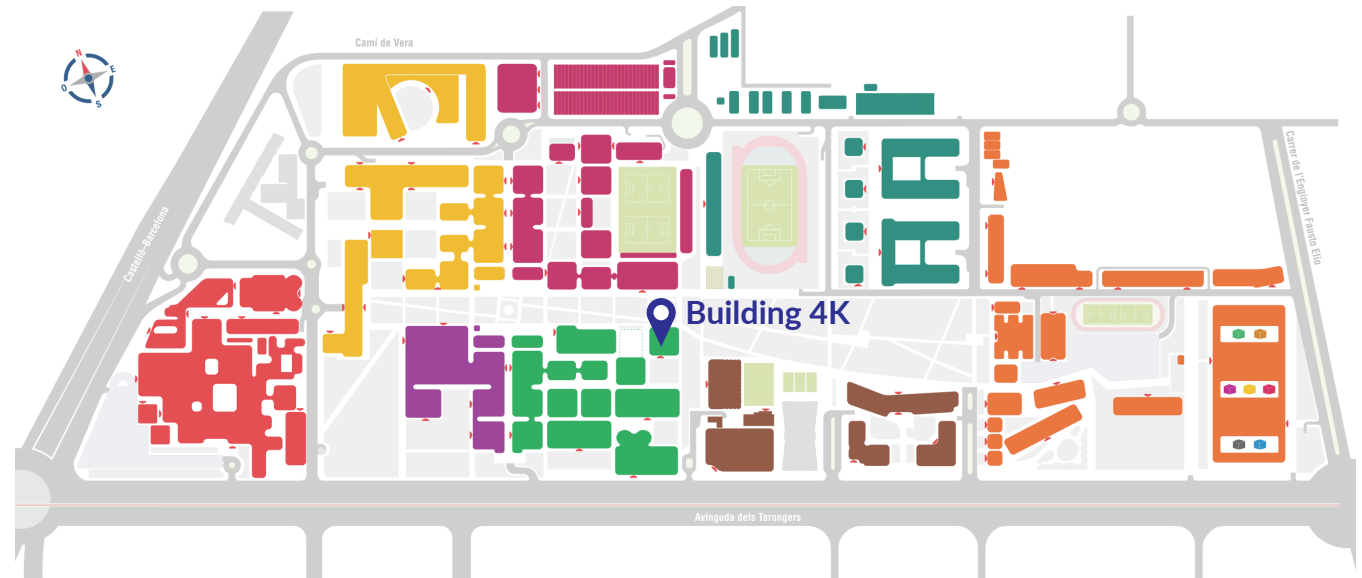
content



office

Where can you find us?

Universitat Politècnica de València, Camino de Vera
s/n, first floor of Casa de l'Alumne (Building 4K),
46022 Valencia



office

What can you do in our office?

1 Get your ESNcard



Our partners



With this card you will have a lot of advantages in the following brands:

Collegiate Marina Real, Red nest hostel, Purple nest hostel, Home Youth Hostel, Youth Hostel Center Valencia, The River Hostel, Hard Rock Café, Rock N'Rolla, Mulligan's, LAV Café, Bocadella, Bocalinda, VivaGym, Myst3ry Rooms, KanguJump, Archicercle, Visit Albufera, Tixalia, MO' Bike, Xceed, Suplife, Eurosender.

For further information you can visit our [website](#).



survival guide

office

Affordable shipping

Our trusted partner **Eurosender** supports student mobility by offering simple and affordable shipping solutions for Erasmus and exchange students around Europe.

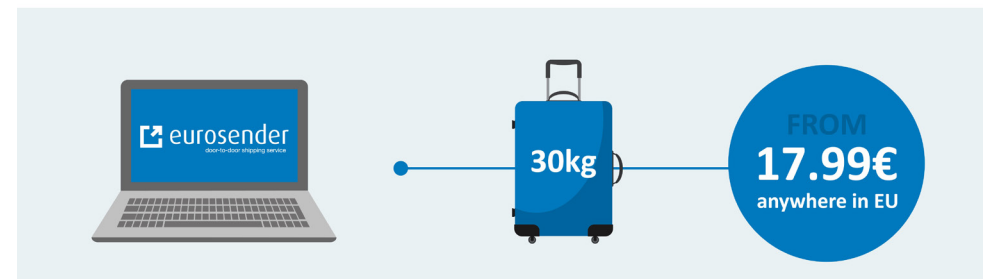
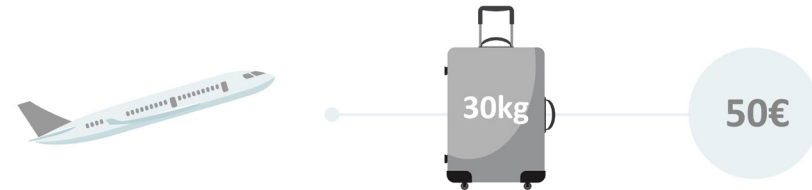
By shipping your luggage, you do not have to compromise on the number of suitcases you want to take with you. Eurosender gives an instant and final price for shipping services and it partners with all the major courier companies.

The great adventure is just about to begin and Eurosender is there for you. Make your journey as easy as possible and ship your stuff!

Don't forget to use the code **ESNUPV10 to get an extra 10% discount!**

For more information and help during the procedures please check Eurosender's [website](#).

What can you do in our office?



office

2 Rent sports material for free



3 Get your tickets and come to our trips and activities



What can you do in our office?

4 Meet the volunteers, join your new family!



accommodation

Looking for a room?

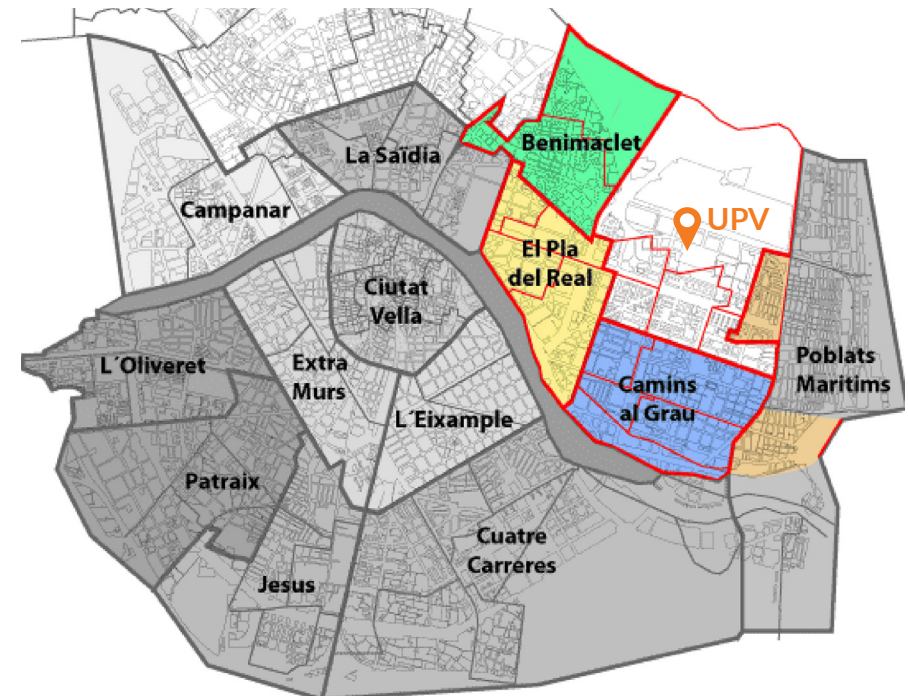
Check our partner [Collegiate Marina Real](#) or download the [Badi App](#) and find a place to live!



We also have a [Facebook group](#) where you can look for a room or for flatmates. In addition, the Universitat Politècnica de València has also a service for searching flats and you can find it in this [link](#).

Where should you live?

You can share a flat in any of the student areas coloured in the map: Pl. Honduras, Pl. Xúquer, Blasco Ibáñez, Amistat, Mestalla, Benimaclet. All of them have a good connection with the UPV.

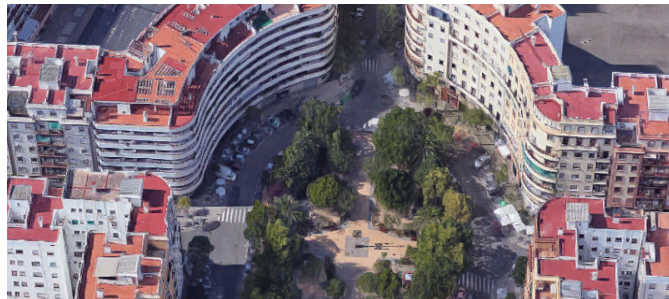


accommodation

Where should you live?



Plaza Honduras



Plaza Xuquer



Blasco Ibáñez



Amistat



Mestalla



Benimaclet

move around

How to move around the city?



The easiest way to reach the Airport is to take the metro to Aeroport (L3 or L5). A ticket costs 3,90€ (ABCD zone) + 1€ for the card.

On weekdays, it's open from 5am to 11:30 pm
For more info, you can check the [website](#)

We also recommend to get the **TuIn** card, which has so many advantages to travel in the metro.

move around



You have many options to go by bus. You can take a ticket at the bus (1,50) But we recommend you to take a Bonobus if you are going to move around Valencia very often. There are many options:

Bonobus

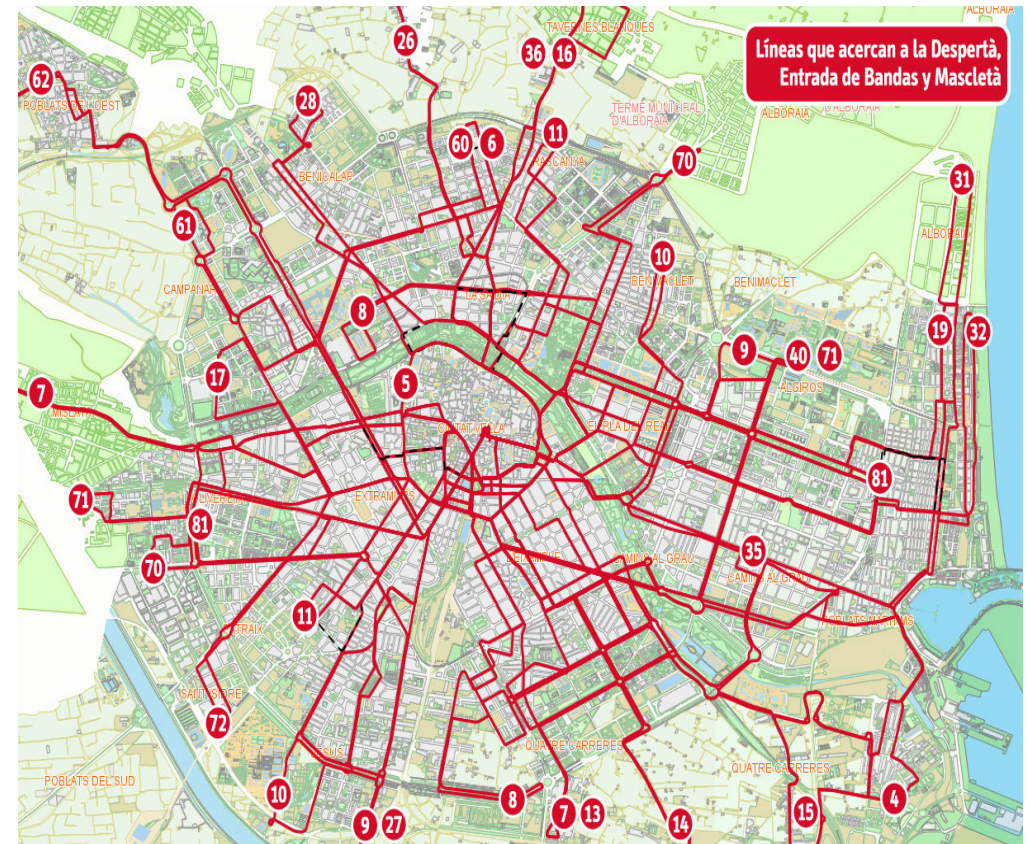
You can top up to 30 trips. Each pack of 10 costs 8.50. The card costs 2€ and you can reuse it. You can take it at the EMT office (Colon Metro station). And you can charge it online or at any kiosk.

You can check the [website](#).

EMT Jove

With this bono you will have unlimited trips from the day you validate the card until the next month. The card costs 3€, and you need to pay 25€/month. It is very useful if you are going to take the bus every day.

You can also ask for a bono that includes metro (Zona A) and Bus.



move around



Valenbisi

Long term subscription

For just 29,21 €, you can choose this option of Valenbisi subscription and get unlimited trips for one year. Remember that the first 30 minutes of each trip are free. You can also use your transport card (Mobilis) as an annual subscription to Valenbisi. To use a bicycle you just need to approach a terminal and log in using your Long Term Hire Card or your associated ticket (Mobilis), enter your PIN code and select an available bicycle.

Weekly subscription

For 13,30€ enjoy the Valenbisi service for one week, an unlimited number of journeys and the first 30 minutes of every ride are free.

When you have completed your journey, locate the bicycle in the closest station with available stands. An audio signal on the stand confirms that the bicycle is locked.



move around

MO'bike

You have the option of renting your own bike.
With your ESNcard, you can enjoy a bicycle as if it was yours for only 20€ per month, and it includes bike, lock and basic maintenance



Ryanair

We have discounts with RYANAIR as well: 15% in 8 one-way flights with a 20kg luggage bag for free! You need to register at escard.org and at ryanair.com. If you have any problem don't hesitate to contact us!



tourism

What to visit in Valencia?



Cathedral and Virgin Square



Lonja



Central Market



Serrano Towers

tourism

What to visit in Valencia?



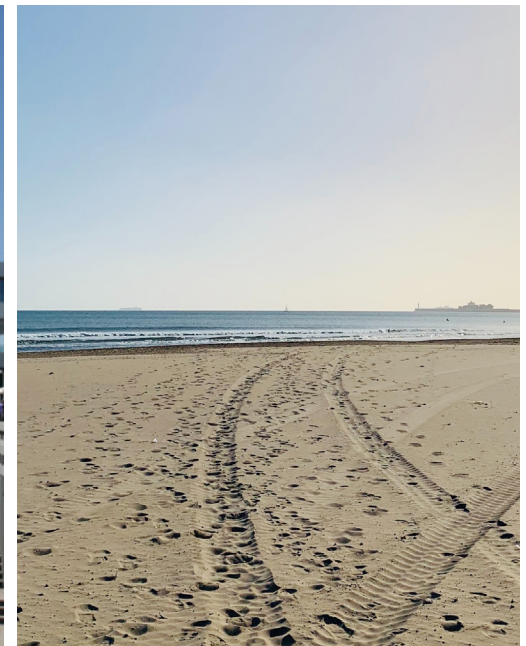
City of Arts and Sciences



Carmen Neighborhood



Marina



Beach

ESN activities

What weekly activities do we have?



Tandem

 Jamon Session

 Monday



Beach Volley

 Malvarrosa Beach

 Sunday



Beer Pong

 Natura Dub

 Wednesday

And much more!

ESN trips

What **one-day trips** are we planning?



Medievals de Teruel

 Teruel

 Feb 22nd Febraury



Peñíscola

 Peñíscola

 Feb 22nd March



Aqualandia & Benidorm

 Benidorm

 Mar 14th June

ESN trips

What **long trips** are we planning?



Madrid/Toledo

 Madrid and Toledo

 8th-9th Febraury



Integration Weekend

 Valencia

 14th-16th Febraury



National Erasmus Games

 Granada

 27th-29th March

ESN trips

What **long trips** are we planning?



National Event de Sevilla al cielo

 Sevilla

 6th-8th March



ESN Island Experience

 Mallorca

 29th April-3rd May



ESN ISLAND
EXPERIENCE

ESN trips

Where are the **long trips** located?



ACTIVITY PROGRAMME

2nd semester 2019/2020  **ESN**
Erasmus Student Network
València UPV

02 February

M	T	W	T	F	S	S
					1	2
3	4	5	6 <small>UPV</small>	7	8	9
10	11	12	13	14	15	16
17	18	19	20	21	22	23
24	25	26	27	28	29	

Welcome day

03 March

M	T	W	T	F	S	S
						1
2	3	4	5	6	7	8
9	10	11	12	13	14	15
16	17	18	19	20	21	22
23	24	25	26	27	28	29
30	31					

04 April

M	T	W	T	F	S	S
		1	2	3	4	5
6	7	8	9	10	11	12
13	14	15	16	17	18	19
20	21	22	23	24	25	26
27	28	29	30			

05 May

M	T	W	T	F	S	S
				1	2	3
4	5	6	7	8	9	10
11	12	13	14	15	16	17
18	19	20	21	22	23	24
25	26	27	28	29	30	31

*Aqualandia+Benidorm 14th June

*Farewell dinner 19th June

ACTIVIDADES

Activities

- Tándem
- International dinner
- Cineforum
- Beerpong
- Curso de paellas 25th Apr
- Bioparc 29th Mar
- Oceanogràfic 1st Feb & 26th Apr
- National Erasmus Games 27th-29th Mar

VIAJES DE UN DÍA

One-day trips

- Medievales Teruel 22nd Feb
- Magdalena 21st Mar
- Peñíscola 22nd Mar
- Guadalest+Altea 5th Apr
- Alicante+Lago Rosa 17th May
- Morella 31st May
- Aqualandia+Benidorm. . . 14th Jun

VIAJES LARGOS

Long trips

- Madrid/Toledo 8th-9th Feb
- Integration Weekend 14th-15th-16th Feb
- EN Sevilla al Cielo 6th-7th-8th Mar
- ESN Island Experience 29th Apr-3rd May

[f / ESNValenciaUPV](https://www.facebook.com/ESNValenciaUPV)

[@esnvalenciaupv](https://www.instagram.com/esnvalenciaupv)

www.esnvalenciaupv.es



survival guide

follow us



@esnvalenciaupv



@Erasmus Student Network Valencia UPV



<https://www.esnvalenciaupv.es/>

see you around!

Enjoy the adventure!



 **ESN**

Erasmus Student Network
València UPV